




Number	Image	Description Title	Acc. Number
5		Elizabethan era Galleon <i>Wasa</i> - Kit model	1991.286.2
6		Thames Barge 'Will Everard' - Scratch built	1991.324
8		Clipper ship 'Alma' - Scratch built waterline model	M973.50.1

9



Grand Banks
Schooner - Scratch built 1974.38.1

12



Chinese Junk -
Scratch built 1991.429

14



Outrigger canoe -
Scratch built 1991.501.3

18



HMS Centurion - Kit 1991.382
model

20



Auxiliary Sailing Ship
'Elizabeth' - Scratch M972.85.1
built

26



paddler wheeler
'royal William' - Kit 1991.287.4
model

28



2 mast Brigantine	No Accession
'News Boy', sails up -	or Catalogue
Scratch Built	#

31



Aux Motor
Schooner 'Lilla Dan' M972.92.3
- Kit model

32



Four Masted
Barque E Leclerc - 1991.323
Scratch built

35



English Galleon -
Scratch built

M972.86.1

36



Haida Maid - Cabin
Cruiser (motor
boat) - Scratch built

No Accession
or Catalogue
#

37



Swedish galleon
'VASA' (WASA) - Kit
model

No Accession
or Catalogue
#

38



Motor schooner
'Lilla Dan' - Kit
model

No Accession
or Catalogue
#

39



HMS Endeavour
with modern CDN
flag - Kit Model

1991.286.1

40



Loch Torrens -
Scratch built

No Accession
or Catalogue
#

41



2 masted sailing
ship 'Surprise' -
Scratch

No Accession
or Catalogue
#

49



Diorama model
Liverpool pilot
schooner
'Perserverance' -
Scratch built

M972.30.4

51



3 mast auxillary
engine sailing ship -
Half hull model

1972.0138.00
3

54



Dutch 'Statenjacht' - 1991.320
Kit model

55



Dutch East India
Trading Company
'Norske Loewe' - Kit 1991.466
model

57



British Ship of the
Line 'Sovereign of
the seas' - Kit M972.69.1
model

59



Barque 'Laurel
Bank' - Scratch built

No Accession
or Catalogue
#

62



Sailing cutter
'Favourite'; F69
sailboat - Scratch
built

2003.1000.87

63



2 mast galleon -
Scratch built

M976.4.3

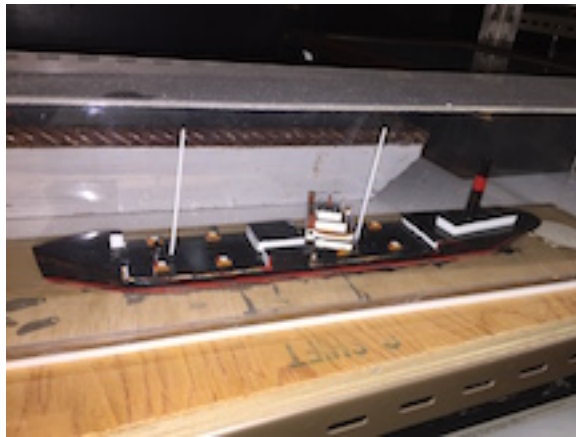
64



Wood Barque
Hinged Masts,
minature - Scratch
built

1991.487

68



Minature model,
steam cargo ship
(Unfinished) -
Scratch built

1984.94.9

71



Passenger liner 'SS
France' - Plastic
souvenir

M973.373.4

74



Two funnel steamer/
Unidentified
Diorama of a
passenger
steamship 2 stack,
folk art style -
Scratch built

2003.1000.08

3

78



Barque, 3 masted
model in waterline
shadowbox "Dart
Pt." 19th c diorama -
Scratch built

2003.1000.08

6

79



Simon Fraser Steam 2010.0010.00
Boat

1

85



Model of a Fijian outrigger canoe. Main hull is extensively carved along sides and top; M972.333.1 the prow is carved in the shape of a large bird - Scratch built

87



SS CORSAIR' 1930-1949 model (by Jas McLure?). Built for the JP Morgan family on east coast,. Sank in Acapulco, Mexico - Scratch built 1991.0379

88



Bressay Lass, sail pond yacht - M972.177.1 Scratch built

89



Sail Pond Yacht -
Scratch built

1991.352??

90



Gertie', sailling
pond yacht -
Scratch built

1972.0177.00
02.001-002M

92



Racing Sail Pond
Yacht (photo is a
yellow strip with
dark blue hull) -
Scratch built

No Accession
or Catalogue
#

93



V.M Blew Bottle or
Bottull Y.C - Scratch 1991.303
built

94



Sail Pond Yacht -
Scratch built

No Accession
or Catalogue
#

96



Passenger liner
'Normandie' -
Scratch built

No accession
or catalogue
number

97



sail Pond Yacht -
Scratch built

No Accession
or Catalogue
#

98



Smit rotterdam' sea No accession
tug - Kit model with or catalogue
booklet instructions number

104



sailing & rowing
ship - Scratch built

No Accession
or Catalogue
#

105



sailing pond yacht -
Scratch built

No Accession
or Catalogue
#

106



Kisutch' sail yacht
racer - Scratch built

No Accession
or Catalogue
#

107



Storm Cloud' Sailing
Ship - Scratch built
waterline M972.87.2

108



Sailing ship
'Danmark' - Kit
model

1991.313

117



Schooner 'Bluenose
II' - Scratch built
wood

1991.355.1

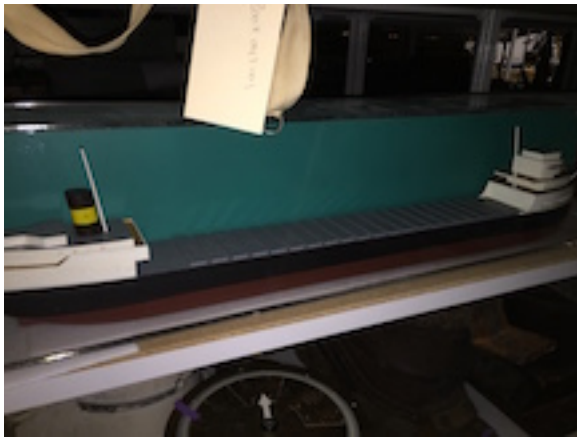
118



Schooner
'Bluenose' - Kit
model

No Accession
or Catalogue
#

126



Great Lakes
Steamer 'Edmund
Fitzgerald' - Scratch
built

No Accession
or Catalogue
#

130



Santa Maria' - kit
model

No Accession
or Catalogue
#

138



Torpedo boat,
german (built at
POW camp in
Letheridge 1943) -
Scratch built

1991.459.1

143



SS Senator' -
Scratch built

No Accession
or Catalogue
Number

144



3 mast steam ship -
Scratch built

No Accession
or Catalogue
#

145



City Of Carlisle'
diorama model. A 3
mast sailing ship
under sail - Scratch
built

No accession
or catalogue
number

147



Man of War 'HMS Prince' - Kit model

No Accession
or Catalogue
#

148



Unnamed fishing
packer - Scratch
built

M972.101.1

149



Tug 'Akragas'
(Kathy M) - Scratch
built

1989.0030.10
1

150



4 masted schooner - No Accession
Scratch built or Catalogue
diorama #

151



Cable Ship 'Lord
Kelvin' - Scratch M972.94.1
built shadow box

154



The 'Pinta' - Kit 1991.339
model

156



RMS Titanic' -
Scratch built

No Accession
or Catalogue
#

157



Unknown lifeboat -
Scratch built

No Accession
or Catalogue
#

161



Steam trawler
'Atlas' - Scratch
built

1972.83.1

162



German battleship
'KM Graf Spee' - M972.90.1
Scratch built

164



Sampan' - Scratch
built M972.331.1

165



CANADIAN CUT-
OUTS paper tug
model pulling paper
log booms. - Kit No accession
or catalogue
number
model

166



Asian river boat
'Porto' - Scratch
built

1991.485

167



Hawaiian Outrigger -
Scratch built

1991.501.4

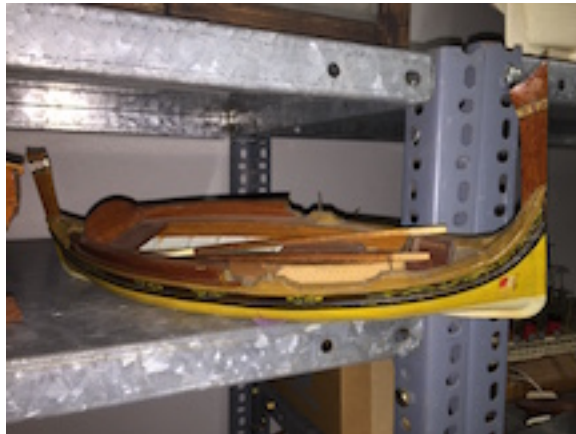
168



ROYAL PRINCESS
model cruise ship -
Commercial micro
model

1993.13

169



Maltese Harbour
Craft

1991.451;
M972.92.1

170



Box with model
parts

No accession
or catalogue
number

175



three mast sailing
ship - artizan

1983.1000.00
1

178



Plastic Destroyer
battle ship -

1991.34

179



Mediterranean
Xebec - Kit model

M974.36.1

180



Sailing ship 'Spray' -
Scratch built

No accession
or catalogue
number

181



5 mast lumber
schooner

No Accession
or Catalogue
#

182



Schooner
'Bluenose' - Scratch
built

No Accession
or Catalogue
#

185



Life Boat/Piggy
Bank -
Commercially made

1992.075

186



Sail Pond Yacht -
Scratch built

No Accession
or Catalogue
#

187



Ark Royal' - Paper
model

No Accession
or Catalogue
#

188



Santa Maria' Paper
model

No accession
or catalogue
number

189



4 masted Barque -
Scratch waterline

M972.73.1

190



Noah's Ark', paper
model

No accession
or catalogue
number

192



Kayak wood -
Carving

M972.92.2a

193



River Mast,
Burmese Rice Boat - M973.64.1
Scratch built

196



Brigantine 'Leon' 1991.286.3

197



Tramp Steamer -
Paper model
No Accession
or Catalogue
#

198



Hansa Cog - scratch
built

No Accession
or Catalogue
#

199



4 masted Barque -
Scratch built

No Accession
or Catalogue
#

200



Cutter, sail - Scratch
built

No Accession
or Catalogue
#

201



Brixton Trawler, a
two-masted
barquentine -
Scratch built

1975.36.2

203



open boat - Scratch
built

No Accession
or Catalogue
#

207



Sail surf board -
Scratch built

1991.486

208



Santa Maria' - Kit
model

1991.338

209



Nina' - Kit model

1991.371

212



Golden Hinde' - Kit
model

1991.376

214



2 masted brig -
Scratch

M972.81.1

215



Barquentine 'Prince
of Wales' - Scratch
built

2005.1013.00
01

218



Naval motor cutter -
scratch built

No Accession
or Catalogue
#

219



Steam locomotive -
Scratch built

No Accession
or Catalogue
#

221



Dutch Barge 'De
Vrouw Hendriena' - M976.65.1
Scratch

223



Elizabethan Galleon
'Le Grande
Mermine' - Kit
model

2007.1034

226



Model of 2 mast
schooner ca. 1900 - M972.178.1
Scratch

227



Hawaiian Outrigger - No Accession
Scratch built or Catalogue
#

228



Banca' type of
Pacific Outrigger
canoe - Scratch M972.334

231



3 masted 'Celtic
Monarch' - Scratch
built

2003.1000.00
09

232



Sail Pond Yacht -
Scratch built

No Accession
or Catalogue
#

233



Open boat/Sails
Primitive Pond
Boat/Model of a
toy sailboat on a
Plexi glass stand -
Scratch built

1991.322

241



Sail pond yacht
'Keta' - Scratch built 1991.301

249



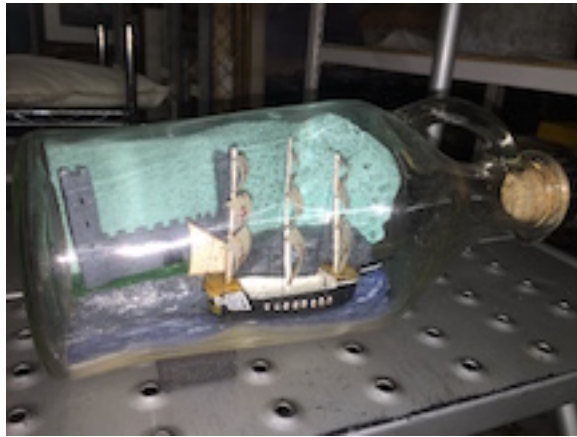
Japanese training
ship 'Nippon Maru' -
scratch built ship in
a bottle 1991.470

247



Ship in a bottle 3
masted schooner
'Ajax' - scratch built
No Accession
or Catalogue
#

250



Unnamed 4 masted
ship-in-a-bottle
model - scratch
built

1991.450

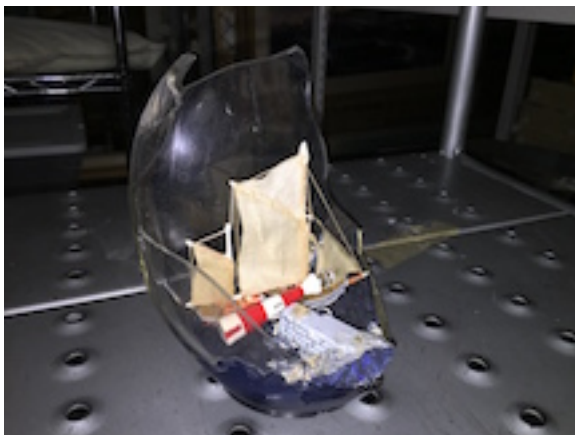
254



Princess
Marguerite' -
Waterline Model

1991.350

255



model of a red and
grey hulled boat
passing buoy and
lighthouse - Scratch
built

1991.483

256



3 mast sailing yacht
- Scratch built 1984.176

264



Model ship
structure - scratch
built No Accession
or Catalogue
#

267



Sulluk' Sampan
river craft - scratch
built M975.20.5

270



Pacific Islands
Outrigger - Scratch M972.332.1
built

271



Goina River Craft - M975.20.1
Scratch built

272



River craft model
from East Pakistan, M975.20.4
probably a "Goina" -
Scratch built

273



South Pacific Sail
canoe and
outrigger - Scratch
built

No Accession
or Catalogue
#

298



half hull

1991.792

299



half hull

1991.457

302



half hull,

No Accession
or Catalogue
#

303



half hull,

No Accession
or Catalogue
#

308



Research Vessel
'Calypso' - kit
plastic

2005.028.001

310



Dec 6, 99 #18?

No Accession
or Catalogue
#

315



half hull,

No Accession
or Catalogue
#

317



Clyde Puffer 'Inch
Holm' - Scratch
built

2007.1053

382



Chinese Junk -
Scratch built

No Accession
or Catalogue
#

383



Cabin Cruiser -
Scratch built

No Accession
or Catalogue
#

385



Various Pond Yacht
Racer Hulls - Fibre
glass moulds

No Accession
or Catalogue
#

restart here

